



Sensormatic Synergy

Storefront detection series

Powerful. Smart. Modular.

Tyco's next generation intelligent, interconnected, and modular detection systems help better manage shrink and maximize EAS investments. Sensormatic Synergy connects multiple technologies in one network-ready storefront system to capture and link actionable data across key operational areas, optimizing store performance and profitability. Its sleek, thin design features multiple looks to fit your brand.



// Powerful.

- Experience advanced loss prevention with Acousto-Magnetic (AM) technology
- Gain item-level shrink visibility by combining AM and RFID
- Count shopper traffic with integrated infrared sensors
- Get visual verification of alarm events with IP/Video

// Smart.

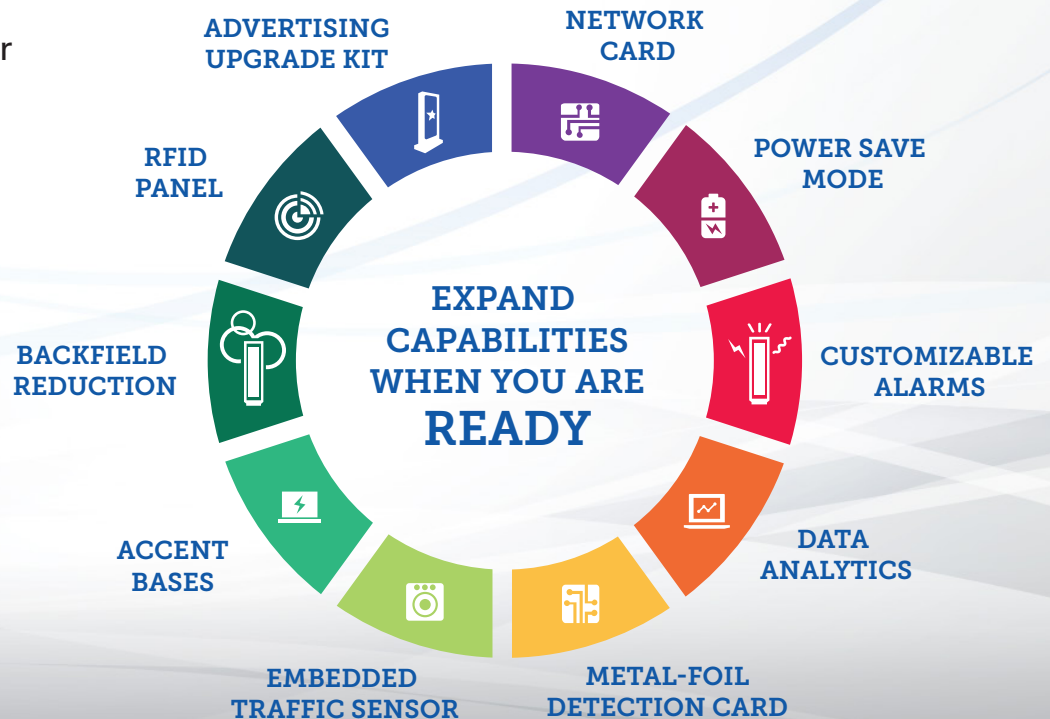
- Improve decision making with access to actionable shopper and inventory intelligence
- Detect true loss events and minimize nuisance alarms with traffic sensors
- Power down system when no customers are present without degrading performance
- Improve staff response with differentiated alarms

// Modular.

- Extend EAS value with RFID for visibility into shrink and operations
- Gain incremental benefits by integrating overhead people counting, video and metal-foil detection
- Complement store design with variety of aesthetic styles

Synergy | syn·er·gy | 'si-nər-jē

noun: The combined power of a group of elements that when connected produce a total effect that is greater than the sum of the individual elements.



// Advertising Upgrade Kit

Leverage pedestal real estate with easy-to-install kit to attract shoppers.

// RFID Panel

Upgrade easily with cost-effective panels for the best of AM technology with RFID-enabled inventory and shrink visibility.

// Backfield Reduction

Display tagged merchandise at the storefront to maximize floor space, without system alarming.

// Accent Bases

Choose from a variety of options to fit your brand.

// Embedded Traffic Sensors

Track shoppers entering stores for traffic intelligence to drive incremental sales and increase conversions.

// Network Card

Enable interconnectivity by a simple plug-in to access EAS and Traffic data online; and remotely manage EAS hardware and firmware.

// Power Save Mode

Consume about 90% less power during non-traffic periods for a potential annual energy savings of nearly \$50k for 1,000 stores, using only 0.08 kWh per hour.

// Customizable Alarms

Improve staff response with visual and audible alarms to distinguish different events like theft, jammer detection, etc.

// Data Analytics

Gain enterprise-wide visibility using connected devices which feed shopper, shrink and inventory data to Tyco's TrueVUE reporting platform.

// Metal-Foil Detection Card

Combat shrink and ORC using Metal-Foil Detection to alert staff of foil-lined bags or clothing, and leverage Jammer Detection to identify shoplifters attempting to disable the system.